

**MCAN**

**PHILADELPHIA, PA.**

**W3XAU**

We wish to acknowledge your communication regarding the reception of our short wave transmitter, W3XAU.

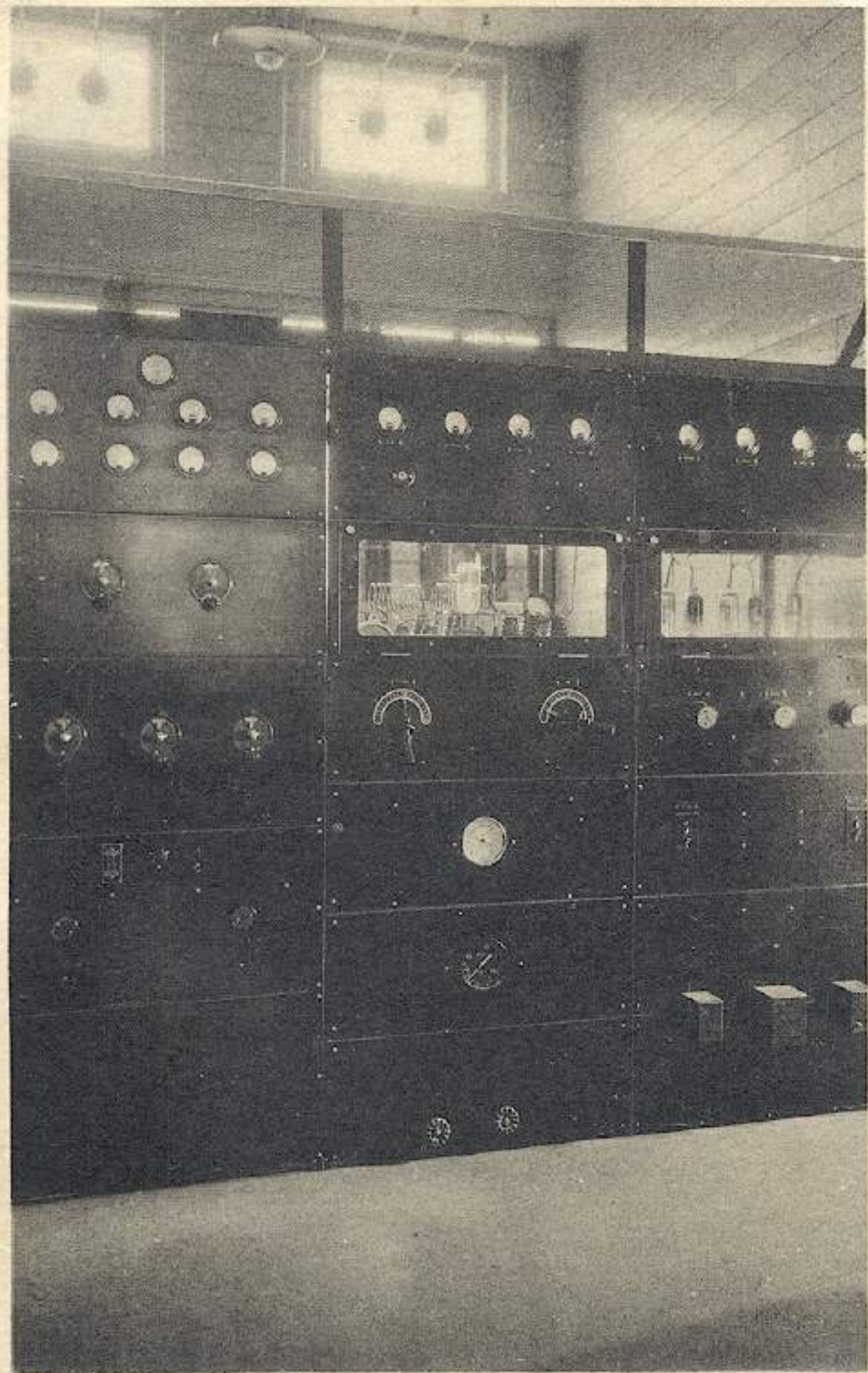
This transmitter is operated on two frequencies 6060 and 9590 kilocycles, corresponding to a wave length of 49.5 and 31.28 meters. The power, at the present time, is ~~500~~<sup>1000</sup> watts, operating from 8.00 A. M. until midnight daily, using either of the two above frequencies.

We would appreciate very much any further comments you may care to make on the signal strength on the two frequencies.

Sincerely yours,

**UNIVERSAL BROADCASTING CO.**





Short Wave Station—W3XAU



34

# POST CARD

This Space for Message

W3XAU, one thousand watt short wave transmitting station of the WCAU Broadcasting Company, Philadelphia, operates on a frequency of 9590 kilocycles between the hours of 12:00 P.M. - 1:00 P.M. and on a frequency of 6060 kilocycles between the hours of 8:00 P.M. - 11:00 P.M. The transmitter is located at Newtown Square, Pa.

*Daylight time*

Reception verified

J. G. Leitch on

WCAU-W3XAU

49.5  
meters

This Space for Address



*Mr. W. Kemp.*

*250. Walnut St.,*

*Waterbury*

*Conn.*

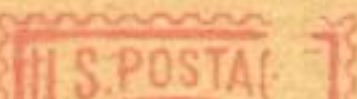




WCAU Building—Philadelphia, Pa.



# POST CARD



This Space for Message

The latest developments in broadcasting studios and equipment have been incorporated in the new WCAU Building, 1622 Chestnut Street Philadelphia.



Reception verified 3/28

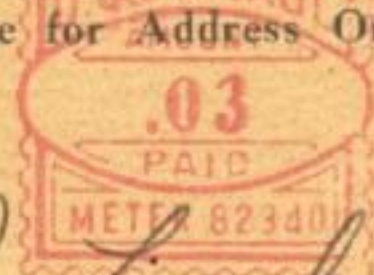
J. G. Leitch

~~WCAU~~-W3XAU

meters



This Space for Address Only



Mr. M. J. Lizak

11 B. Murray St.  
Toronto Ontario,  
Canada



This is to verify reception of W3XAU  
from its studios at 1622 Chestnut Street,  
Philadelphia, through the 10 kilowatt  
transmitter at Newton Square, Pa. on  
a frequency of ~~6000~~ 9590 kilocycles.

Reception verified on 31.28 meters.

J. G. Leitch

~~WCAU~~-W3XAU

6-14-1937.

Philadelphia, Pennsylvania - U. S. A.

We are pleased to acknowledge your report and to  
verify reception of international broadcast station W3XAU  
on March 26, 1938 using 9590 kilocycles

Reception verified

J. G. Leitch

Studios - 1622 Chestnut St.,  
6060, 9590, 21,520 kilocycles

Transmitter - Newtown Square, Pa.  
10,000 Watts



Philadelphia, Pennsylvania, U. S. A.

We are pleased to acknowledge your report and to  
verify reception of broadcast on 2/6/41 - 7<sup>07</sup> PM.  
using 6060 kilocycles.

INTERNATIONAL SHORT WAVE  
STATION WCAB

*P. Nadich*  
Directional antenna pointing toward Europe &  
South America. 6060 & 15270 Kilocycles  
Transmitter-Newtown Square, Pa.  
Studios - 1622 Chestnut St., Phila., Pa.